

Polo Vivo



Index

03 Introduction

04 Design

05 Features

07 Wheels, Rims and Trims

09 Paint Finishes



The crowd favourite

The Polo Vivo is a crowd favourite. With versatile features like front electric windows, ISOFIX mounting points for baby seats and an ultrasonic alarm, it's got something for everyone. Created to turn heads, the Polo Vivo has the beauty, power and innovation of a Volkswagen vehicle - with its vibrant exterior, impressive interior and unmatched power output.

Trendline:	1.4 55kW
Comfortline:	1.4 63kW
Comfortline Tiptronic®:	1.6 77kW
Highline:	1.6 77kW
TSI GT:	1.0 81kW

*For more information on standard features and optional extras on selected models, visit www.vw.co.za.



It speaks for itself

Join the dark side with the Polo Vivo Black Style package. The gloss black finish on the roof, mirror caps, 16" Portago wheels and pillar covers make a statement without saying a word. Demand attention with matt black side sill covers, lowered suspension (~15mm), body-coloured GT boot spoiler, privacy glass and chrome exhaust tip. With this sleek and daring design, the Polo Vivo speaks for itself.

*Available on the Comfortline Manual and Highline model.



Sit back **and relax**

The Polo Vivo cockpit is tailored to your every need. Standard with an electronic rev counter, digital clock and digital trip recorder, the Vivo is always thinking a step ahead. The air-conditioning, passenger vanity mirror and front door pockets maximize your comfort, while the height- and reach-adjustable steering column, power steering and manual anti-dazzle rear-view mirror ensure the best driving conditions for the journey.

*For more information on optional extras on selected models, visit www.vw.co.za



Never miss a beat

The Polo Vivo range, from the Trendline to the GT, is equipped with a 6,5 inch touchscreen radio with SD, USB, Bluetooth, App-Connect with B-sting/2 speakers and 2 tweeters. In addition to these features, the Highline and GT come standard with 4 speakers and 2 tweeters.

App-Connect allows you to access your iPhone/CarPlay screen, selected apps, maps and music by syncing with the infotainment system.

For more information on standard features and optional extras on selected models, visit www.vw.co.za



Stay in touch

Stay in touch, even when you're away. Using We Connect Go, the Polo Vivo seamlessly connects your smartphone to your Volkswagen via Bluetooth using the DataPlug, keeping you in tune with your Polo Vivo. Compatible with Android and iOS devices, the We Connect Go app shows you your logbook, fuel monitor, driving style analysis and driving statistics, services and schedules, breakdown assistance and parking space locator.



Safe and **sound**

Drive with confidence knowing the Polo Vivo has got you covered. ISOFIX baby seat mounting points and childproof locks on rear doors ensure safe travels for baby, while the driver and passenger airbags and high-level brake light keep everyone protected in the event of an accident. The Polo Vivo not only protects but prevents accidents too, using the high-level brake light, Electronic Stability Control and Tyre Pressure Monitor. German-engineering you can trust, the new Polo Vivo puts your safety first.

*Electronic Stability Control and Tyre Pressure Monitor are optional across the Trendline and manual Comfortline models

*Red stitching available on Polo Vivo GT model only



More life **More Power**

Experience the thrill of the Polo Vivo GT. With a sleek and dynamic exterior, this high-performance Volkswagen sports 17-inch "Mirabeau" wheels and a single pipe exhaust with chrome trim. Both stylish and athletic, 1.0 TSI 81kW engine, along with front sport seats, aluminium-look pedals and 'Anthracite' headlining.



Trim levels to suit your lifestyle



Trendline

- ✓ 1.4 55kW
- ✓ "Tradition" seat trim
- ✓ Central locking system without SAFELOCK, with radio remote control and 1 remote control folding key
- ✓ Front electric windows

Comfortline

- ✓ 1.4 63kW
- ✓ 6Jx15" "Estrada" alloy wheel
- ✓ "City" seat trim
- ✓ Multi-function Steering Wheel
- ✓ Front fog lamps and cornering light

Comfortline Tiptronic®

- ✓ 1.6 77kW
- ✓ 6Jx15" "Estrada" alloy wheel
- ✓ "City" seat trim
- ✓ Multi-function Steering Wheel
- ✓ Electronic Stability Control w/ driver steering recommendation, ABS, ASR, EDL, EDTC and trailer stabilization

Highline

- ✓ 1.6 77kW
- ✓ 7Jx16" "Rivazza" alloy wheel
- ✓ Cruise Control
- ✓ "Cable" seat trim
- ✓ Leather wrapped multi-function Steering Wheel with aluminium inserts

TSI GT

- ✓ 1.0 81kW
- ✓ 7Jx17" "Mirabeau" alloy wheel
- ✓ Sports comfort seats
- ✓ "Blade Red" seat trim
- ✓ Lowered suspension (-15mm)
- ✓ GT logo on sides of vehicle and grille
- ✓ 'Anthracite' sunvisors
- ✓ Light and Vision Package
- ✓ Tailgate spoiler in black





Wheels & Rims



14" steel wheels
(Standard on Trendline)



15" Estrada Alloy
(Standard on Comfortline
/Optional on Trendline)



16" Rivazza Alloy
(Standard on Highline
/Optional on Comfortline)



17" Mirabeau Hill Alloy
(Standard on GT)

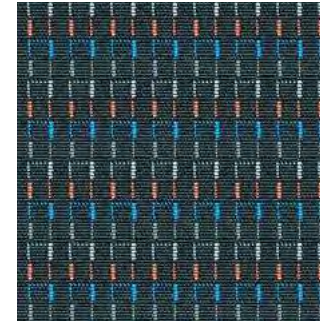


16" Portago Gloss Black Alloy
(Optional on Comfortline
and Highline with Black Style
Package)





Trims



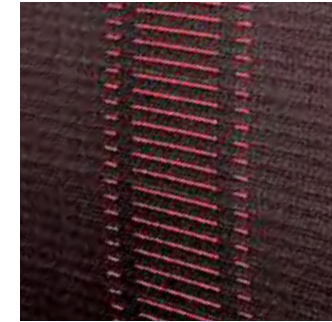
Tradition
(Standard on Trendline)



City
(Standard on Comfortline)



Cable
(Standard on Highline)



Blade Red
(Standard on GT)



Colours and paint finishes



*The illustrations on this page can only be regarded as a general guide as digital rendering is unable to fully express the depth and brilliance of the paint finishes with definite accuracy.

**Choose from 5 paint finishes.
Arrive in style, finish with impact.**

Solid paint finishes



Pure White

Metallic paint finishes



Reef Blue



Limestone Grey



Reflex Silver



Wild Cherry







Polo Vivo Specifications



Engine, Transmission & Fuel Consumption

X = standard O = optional - = not available

	1.4 55kW Trendline	1.4 63kW Comfortline	1.6 77kW Comfortline Tiptronic®	1.6 77kW Highline	1.0 81kW TSI GT
Engine					
Cylinders	4	4	4	4	3
Capacity (cm3)	1398	1398	1598	1598	999
Bore/Stroke (mm)	76,5 / 75,6	76,5 / 75,6	76,5 / 86,9	76,5 / 86,9	74.5 / 76.4
Valves (per cylinder)	4	4	4	4	4
Compression Ratio	10.5 : 1	10.5 : 1	10.5 : 1	10.5 : 1	-
Fuel Injection	X	X	X	X	X
CO2 Emissions (g/km)	132	140	156	147	114
Transmission					
5-speed manual	X	X	-	X	-
6-speed manual	-	-	-	-	X
6-speed manual Tiptronic®	-	-	X	-	-
Performance					
Power output (kW @ r/min)	55 @ 4800	63 @ 5000	77 @ 5250	77 @ 5250	81 @ 5000
Torque (Nm @ r/min)	130 @ 3,750	132 @ 3,750	153 @ 3800	153 @ 3800	200 @ 2000
Top speed (km/h)	171	177	188	188	196
Fuel consumption (litres / 100 km)*					
Combined	5,7	5,9	6,6	6,2	4,8



Performance, Axles and Brakes

X = standard O = optional - = not available

	1.4 55kW Trendline	1.4 63kW Comfortline	1.6 77kW Comfortline Tiptronic®	1.6 77kW Highline	1.0 81kW TSI GT
Running Gear					
Front axle:					
Lowered suspension	-	-	-	-	X
Raised suspension (15mm)	-	-	X	-	-
Suspension struts, wishbone	X	X	X	X	X
Rear axle:					
Suspension struts, toe correcting, torsion beam, trailing arm axle	X	X	X	X	X
Brakes					
Brake fluid warning indicator	X	X	X	X	X
Brake pressure regulator	X	X	X	X	X
Front discs	X	X	X	X	X
Rear drum brakes	X	X	X	X	X
ABS with EBD	X	X	X	X	X



Rims and Tyres

X = standard O = optional - = not available



	1.4 55kW Trendline	1.4 63kW Comfortline	1.6 77kW Comfortline Tiptronic®	1.6 77kW Highline	1.0 81kW TSI GT
Wheelrims / Tyres					
Full wheel trim covers	X	X	X	-	-
Space-saving spare wheel	X	X	X	X	X
Wheel cover 5J X 14 steel 185/60 R 14	X	-	-	-	-
“Estrada” 6J X 15 alloy 185/60 R 15	O	X	X	-	-
“Rivazza” 7J X 16 alloy 195/55 R 16	-	O	O	X	-
“Mirabeau” 7J X 17 alloy 215/40 R17	-	-	-	-	X

Dimensions

X = standard O = optional - = not available

	1.4 55kW Trendline	1.4 63kW Comfortline	1.6 77kW Comfortline Tiptronic®	1.6 77kW Highline	1.0 81kW TSI GT
Dimensions / Capacities					
Fuel tank 45l	X	X	X	X	X
Luggage compartment 280l	X	X	X	X	X
(seats folded 952l)	X	X	X	X	X
DIN Kerb Weight (kg) (Kerb weight may vary depending on options fitted to vehicle)	1063	1066	1102	1081	1092
Gross Vehicle Mass (kg)	1530	1540	1570	1540	1530
Length (mm)	3972	3972	3972	3972	3972
Width (mm)	1682	1682	1682	1682	1682
Height (mm)	1462	1462	1462	1462	1447
Track - front (mm)	1463	1463	1463	1463	1463
Track - rear (mm)	1456	1456	1456	1456	1456
Turning circle (m)	10,6	10,6	10,6	10,6	10,6
Wheel base (mm)	2470	2470	2470	2470	2470
Ground Clearance (mm)	143	143	143	143	128



Connectivity

X = standard O = optional - = not available

	1.4 55kW Trendline	1.4 63kW Comfortline	1.6 77kW Comfortline Tiptronic®	1.6 77kW Highline	1.0 81kW TSI GT
Audio & Communication					
Radio 140G SD/USB/Bluetooth with B-sting/2 Speakers and 2 Tweeters	X	X	X	-	-
Radio 340G SD/USB/Bluetooth/App-Connect with B-sting/2 Speakers and 2 Tweeters	-	O	O	-	-
Radio 340G SD/USB/Bluetooth/App-Connect with B-sting/4 Speakers and 2 Tweeters	-	-	-	X	X



*Available on the Polo Vivo Highline & GT models only.
Optional on the Comfortline

Safety

X = standard O = optional - = not available

	1.4 55kW Trendline	1.4 63kW Comfortline	1.6 77kW Comfortline Tiptronic®	1.6 77kW Highline	1.0 81kW TSI GT
Safety					
Driver and passenger airbags	X	X	X	X	X
ISOFIX child seat mounting points in rear	X	X	X	X	X
Childproof locks on rear doors	X	X	X	X	X
High level brake light	X	X	X	X	X
Front fog lights	-	X	X	X	X
Parking package (rear-view camera with rear PDC)	-	O	O	O	O
Electronic Stability Control	O	O	X	X	X
Tyre Pressure Monitor	O	O	X	X	X
Lights and Vision Package (Rain Sensor + Dusk Sensor)	-	O	O	O	X
LED Headlights Package (incl. Lights and Vision Package) forces PXX on Comfortline Manual	-	O	O	O	O



Security

X = standard O = optional - = not available

	1.4 55kW Trendline	1.4 63kW Comfortline	1.6 77kW Comfortline Tiptronic®	1.6 77kW Highline	1.0 81kW TSI GT
Security					
Electronic Immobiliser	X	X	X	X	X
Central locking system without SAFELOCK, with radio remote control and 2 remote control folding keys	X	X	X	X	X
Ultrasonic alarm sensors	X	X	X	X	X
We Connect Go	X	X	X	X	X



Mirrors, Windows and Wipers

X = standard O = optional - = not available

	1.4 55kW Trendline	1.4 63kW Comfortline	1.6 77kW Comfortline Tiptronic®	1.6 77kW Highline	1.0 81kW TSI GT
Mirrors					
Aspherical driver's side	X	X	X	X	X
Black exterior mirrors	X	-	-	-	-
Body-coloured exterior mirrors	-	X	X	X	X
Manual and remotely adjustable mirrors from inside	X	X	X	X	X
Windows					
Green heat-insulating glass windows on sides and in rear	X	X	X	X	X
Front electric windows	X	X	X	X	X
Wiper System					
Rear window wiper with Intermittent control	X	X	X	X	X



Interior Features

X = standard O = optional - = not available

	1.4 55kW Trendline	1.4 63kW Comfortline	1.6 77kW Comfortline Tiptronic®	1.6 77kW Highline	1.0 81kW TSI GT
Interior Features					
Heating and fresh air ventilation system	X	X	X	X	X
Cup holders, 2 integrated into centre console	X	X	X	X	X
Digital clock	X	X	X	X	X
Digital trip recorder	X	X	X	X	X
Sun visors with vanity mirror on front passenger side	X	X	X	X	X
Electronic rev counter	X	X	X	X	X
Front door pockets	X	X	X	X	X
Height-adjustable steering column	X	X	X	X	X
Reach-adjustable steering column	X	X	X	X	X
Multi-function steering wheel	-	X	X	-	-
Leather-wrapped multi-function steering wheel with aluminium inserts	-	-	-	X	X
Painted upper centre console - Anthracite	X	X	X	X	-
Painted upper centre console - Colour	-	-	-	-	X
Anthracite sunvisors	-	-	-	-	X
Anthracite headlining/cover and A,B,C post uppers	-	-	-	-	X
Gearshift knob in leather	-	-	-	X	X
High tone hooter	X	X	X	X	X
Lights on warning buzzer	X	X	X	X	X
Manual anti-dazzle rear-view mirror	X	X	X	X	X
Power steering	X	X	X	X	X
Manually controlled airconditioner	X	X	X	X	X
Multi-function Display	-	X	X	X	X
Cruise control	-	O	O	X	X
Sport pedal cluster	-	-	-	-	X
Loose-lay carpets mats	O	O	O	O	X



Seats

X = standard O = optional - = not available

	1.4 55kW Trendline	1.4 63kW Comfortline	1.6 77kW Comfortline Tiptronic®	1.6 77kW Highline	1.0 81kW TSI GT
Seats					
Height-adjustable front head restraints	X	X	X	X	X
Rear head restraints	X	X	X	X	X
Rear seat bench backrest - fixed folding	X	X	X	X	X
Height-adjustable driver seat	-	X	X	X	X
"Tradition" cloth seat trim	X	-	-	-	-
"City" cloth seat trim	-	X	X	-	-
"Cable" cloth seat trim	-	-	-	X	-
"Blade Red" cloth seat trim	-	-	-	-	X
Front Sports Seats	-	-	-	-	X



*Red stitching available on Polo Vivo GT model only

Exterior Features

X = standard O = optional - = not available

	1.4 55kW Trendline	1.4 63kW Comfortline	1.6 77kW Comfortline Tiptronic®	1.6 77kW Highline	1.0 81kW TSI GT
Exterior Features					
Body-coloured bumpers	X	X	X	X	X
Black door handles	X	-	-	-	-
Body-coloured door handles	-	X	X	X	X
Rear tailgate spoiler	-	-	-	-	X
Front-end underbody cladding incl. stone guard	-	-	X	-	-
GT lettering on the tailgate, front grille and side	-	-	-	-	X
Black side moulding	-	-	-	-	X
Sporty single-pipe exhaust system with chrome trim	-	-	-	-	X
Black Styling Package + 16" Portago Alloy Wheels	-	O	-	O	-



Warranty

X = standard O = optional - = not available

	1.4 55kW Trendline	1.4 63kW Comfortline	1.6 77kW Comfortline Tiptronic®	1.6 77kW Highline	1.0 81kW TSI GT
Guarantees					
Warranty 3-year / 120 000 km	X	X	X	X	X
Anti-corrosion Warranty (6 years)	X	X	X	X	X
15 000 km service intervals	X	X	X	X	X
Volkswagen EasyDrive Vehicle Maintenance Plan	O	O	O	O	O
Volkswagen EasyDrive Vehicle Service Plan	O	O	O	O	O

Disclaimer

*Dimensions, capacities and abilities apply to standard vehicles.
Actual consumption will vary with vehicle loading, driving style, climatic and road conditions.
The above information is effective as at 12 January 2023 for model year 23 and is subject to change without Prior Notice.



